



# IL-5 Polyclonal Antibody

<b>Catalog No</b>	YP-Ab-15939
<b>Isotype</b>	IgG
<b>Reactivity</b>	Human;Mouse;Rat
<b>Applications</b>	WB;IHC;IF;ELISA
<b>Gene Name</b>	IL5
<b>Protein Name</b>	Interleukin-5
<b>Immunogen</b>	The antiserum was produced against synthesized peptide derived from human IL-5. AA range:43-92
<b>Specificity</b>	IL-5 Polyclonal Antibody detects endogenous levels of IL-5 protein.
<b>Formulation</b>	Liquid in PBS containing 50% glycerol, 0.5% BSA and 0.02% sodium azide.
<b>Source</b>	Polyclonal, Rabbit,IgG
<b>Purification</b>	The antibody was affinity-purified from rabbit antiserum by affinity-chromatography using epitope-specific immunogen.
<b>Dilution</b>	WB: 1/500 - 1/2000. IHC: 1/100 - 1/300. ELISA: 1/5000.. IF 1:50-200
<b>Concentration</b>	1 mg/ml
<b>Purity</b>	≥90%
<b>Storage Stability</b>	-20°C/1 year
<b>Synonyms</b>	IL5; Interleukin-5; IL-5; B-cell differentiation factor I; Eosinophil differentiation factor; T-cell replacing factor; TRF
<b>Observed Band</b>	30kD
<b>Cell Pathway</b>	Secreted.
<b>Tissue Specificity</b>	
<b>Function</b>	function:Factor that induces terminal differentiation of late-developing B-cells to immunoglobulin secreting cells.,online information:Interleukin-5 entry,similarity:Belongs to the IL-5 family.,subunit:Homodimer; disulfide-linked.,
<b>Background</b>	This gene encodes a cytokine that acts as a growth and differentiation factor for both B cells and eosinophils. The encoded cytokine plays a major role in the regulation of eosinophil formation, maturation, recruitment and survival. The increased production of this cytokine may be related to pathogenesis of eosinophil-dependent inflammatory diseases. This cytokine functions by binding to its receptor, which is a heterodimer, whose beta subunit is shared with the receptors for interleukine 3 (IL3) and colony stimulating factor 2 (CSF2/GM-CSF). This gene is located on chromosome 5 within a cytokine gene cluster which includes interleukin 4 (IL4), interleukin 13 (IL13), and CSF2 . This gene, IL4, and IL13 may be regulated coordinately by long-range regulatory elements spread over 120 kilobases on chromosome 5q31. [provided by RefSeq, Jul 2013],



**matters needing attention**

Avoid repeated freezing and thawing!

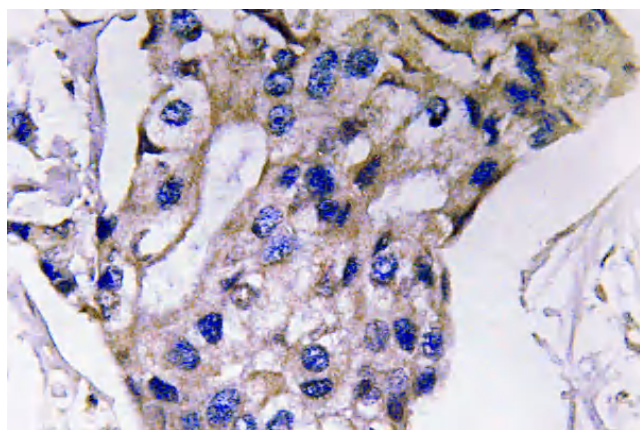
**Usage suggestions**

This product can be used in immunological reaction related experiments. For more information, please consult technical personnel.

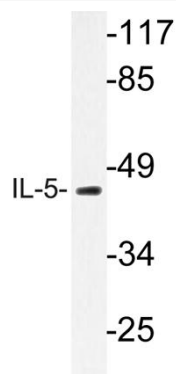
## Products Images



Western Blot analysis of various cells using IL-5 Polyclonal Antibody



Immunohistochemistry analysis of IL-5 antibody in paraffin-embedded human breast carcinoma tissue.



Western blot analysis of lysate from HT-29 cells, using IL-5 antibody.